

## Converting an image to a colour profile for printing

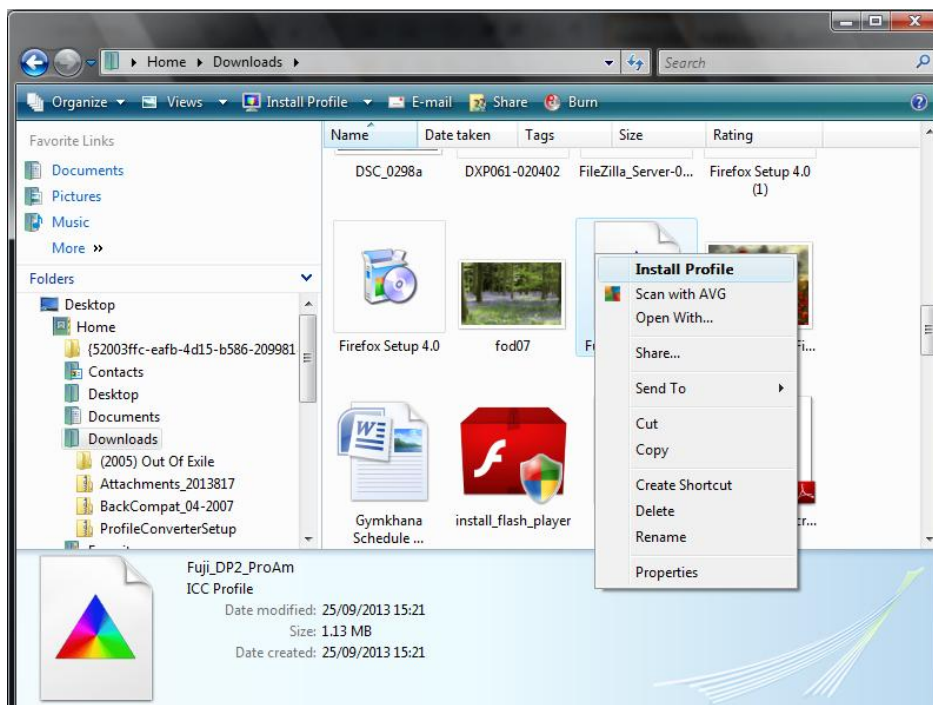
### Install the ICC converter

Download the ICC converter from [http://www.drycreekphoto.com/tools/profile\\_converter/](http://www.drycreekphoto.com/tools/profile_converter/)

### Install colour profiles

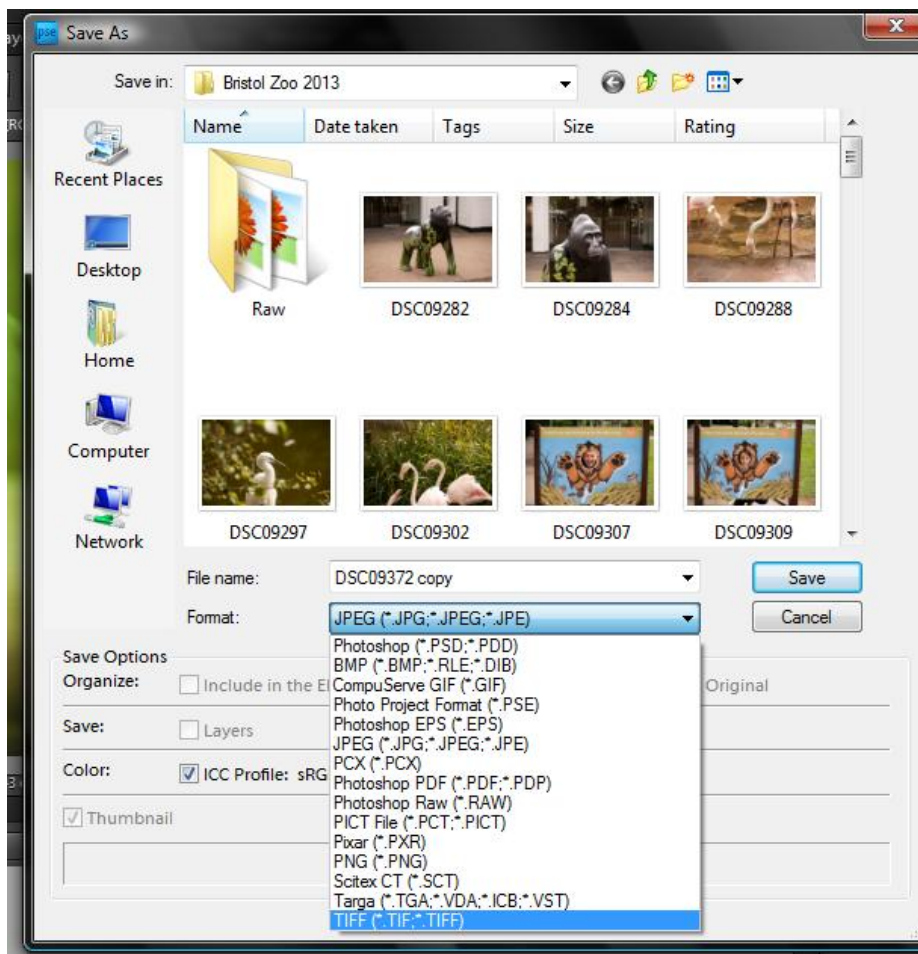
Install the fuji profile from ProAm or Keynsham

Right click on the profile and select install profile

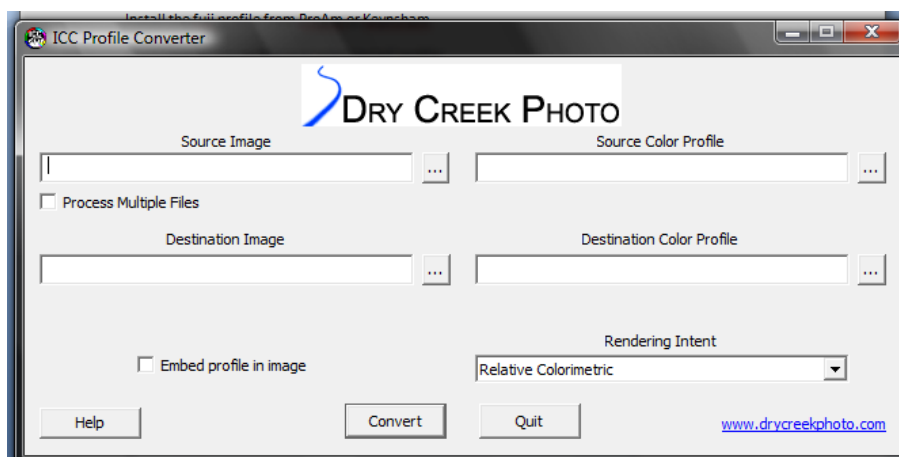


## Photoshop Elements

After you have edited the image open the image in Photoshop Elements and save as a **TIFF**



## Open the Dry Creek ICC converter



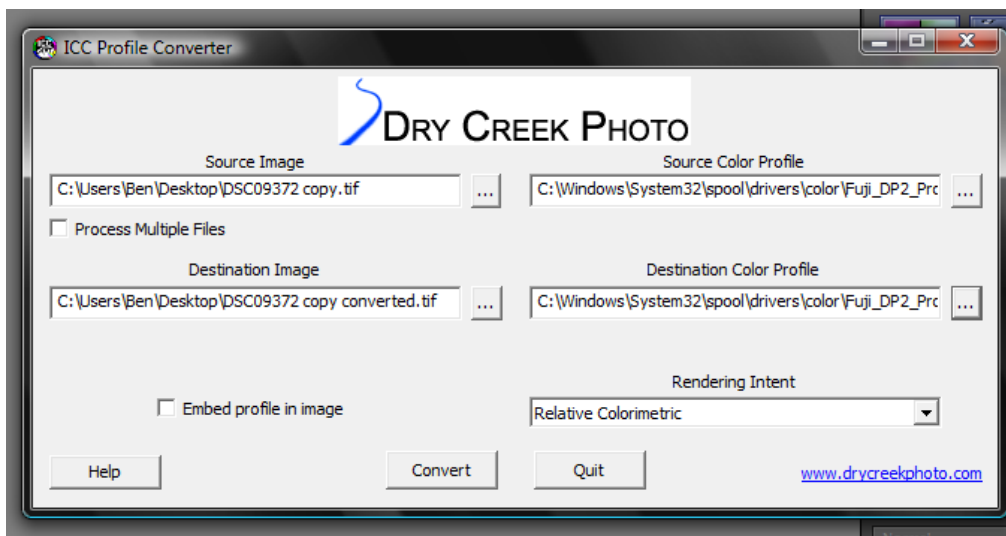
Fill in the 4 boxes with the relevant details

Source image = the TIFF file you want to convert

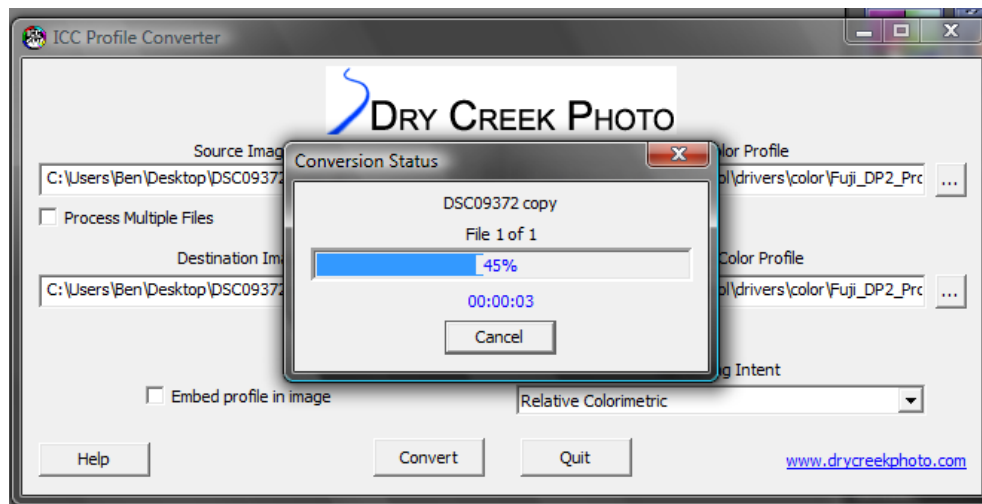
Source colour profile = the current profile your computer uses e.g., sRGB Color Space Profile

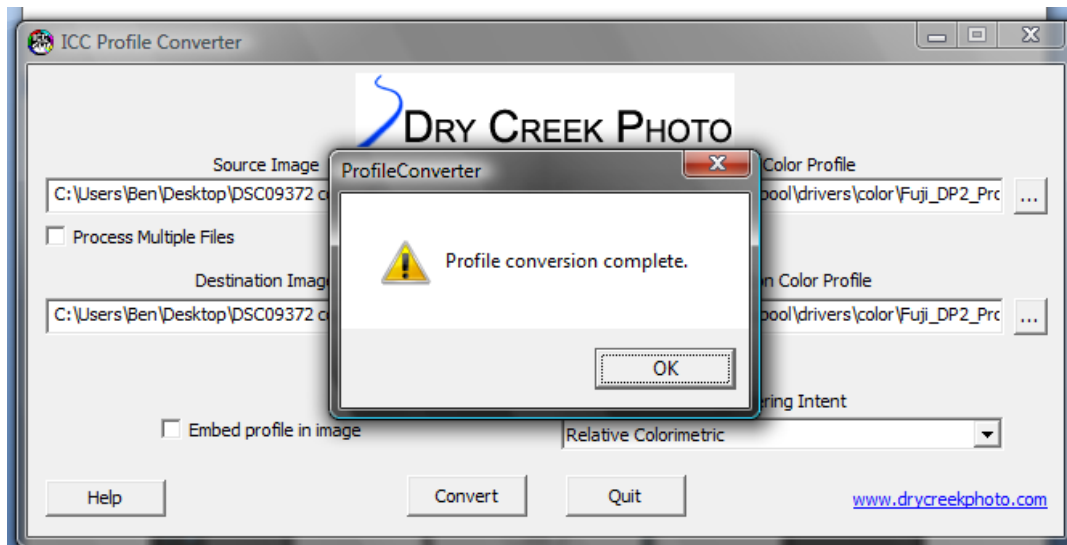
Destination image = the folder where the converted image will live (it may be useful to use the same file name but add “converted” on the end to differentiate the two files)

Destination colour profile = the fuji profile for either ProAm or Keynsham



Click convert





## Back to Photoshop Elements

Reopen the converted TIFF file in Photoshop Elements

Resize the image to your wanted dimensions and then save as a **JPEG**

